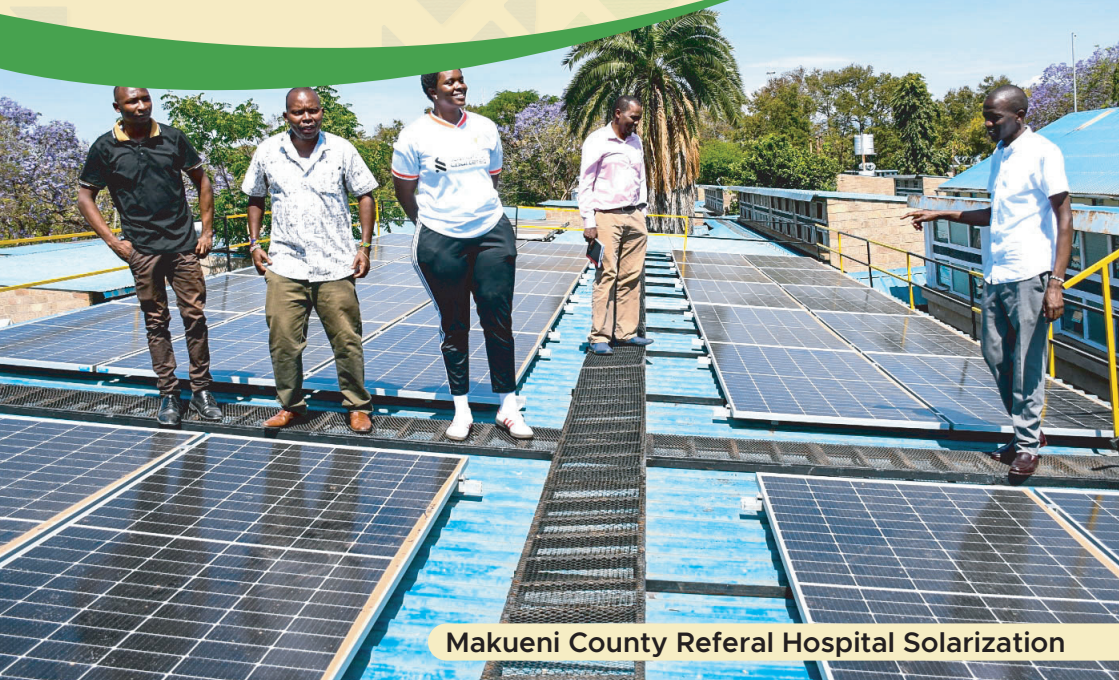




GOVERNMENT OF MAKUENI COUNTY THE COUNTY TREASURY

WOTE/NZIU WARD DEVELOPMENT PROFILE, 2024 (Projects for FY 2022/23 - 2023/24)



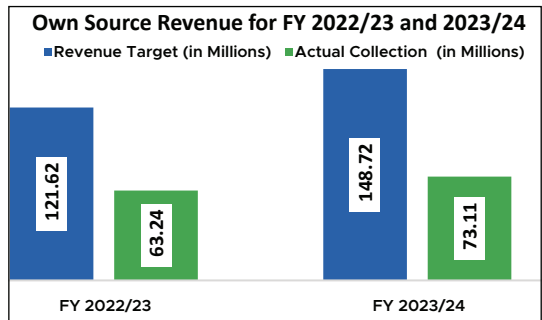
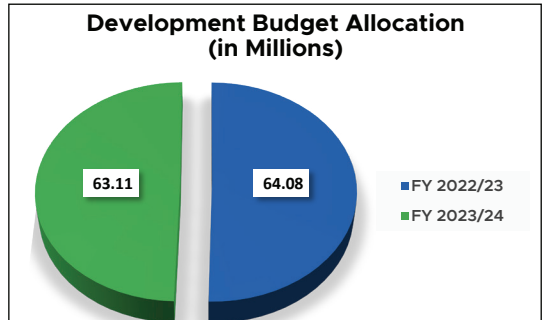
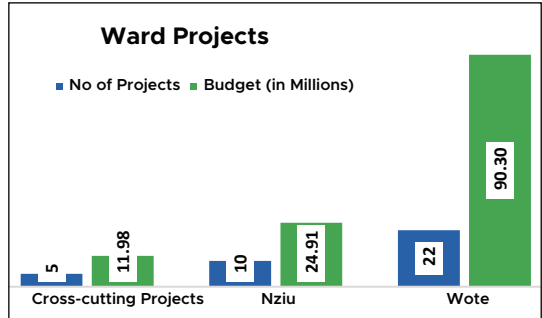
Makueni County Referral Hospital Solarization

'Wanni wa Kwika neza na Ufungaji'

INTRODUCTION

The Ward Development Profile provides an overview of milestones achieved in County for the FY 2022/23 and FY 2023/24. It documents all programmes/projects implemented across the ward, highlighting key benefits to the citizens of Makueni County

BACKGROUND INFORMATION



MILESTONES



WATER ACCESS

The county Government increased water access and volumes of water harvested across the ward through the following: -

- Solarization of Mwaani booster borehole and Kamende borehole serving Wote town
- Water distribution from Kitikyumu and Kathuma boreholes benefitting approximately 530 households.
- Equipping Makueni Girls borehole which has a yield of 1.8m³/hr , benefitting approximately 1,300 students
- Electrification and distribution Kaiti Kamunyii water project serving a population of approximately 1,200 people with 60 individual connections.



AGRICULTURAL VALUE CHAIN

In efforts to increase agricultural production and productivity, the county government: -

- Promoted dairy value chain through provision of 291 Artificial Insemination (AI) services through cooperatives
- Vaccinated 23,439 livestock against pest and diseases
- Mapped, trained and issued fruit fly control baits to 2,937 farmers creating zones of low pest prevalence
- Under KCEP CRAL; supported 800 farmers with certified seeds, pesticides and three pond liners of average capacity of 800m³.

UNIVERSAL HEALTH COVERAGE

Efforts to enhance and increase access to essential primary healthcare were achieved through: -

- Installation of a 205kWp grid-tied solar hybrid system at Makueni County Referral Hospital, saving the facility 30% of annual electricity expenses besides contributing to environmental sustainability.
- Operationalization of Neonatal ICU
- Engagement of 47 CHPs whose main function is to implement and promote primary health care at community level.



MILESTONES



ROAD ACCESS AND CONNECTIVITY

The county government improved road network connectivity and electrification through: -

- Opening 13.4 km of roads, grading 99.75km and gravelling 11.1km connecting institutions, villages, shopping centers, improving access and transportation for residents.
- Installation of drainage structures such as 180m of culverts and 100 gabion boxes to ensure the roads remain passable during heavy rains, minimizing erosion and water damage.
- Excavation of 501M 3 catch water mitre drains as a way of transforming roads into climate resilient infrastructure and improving agricultural production.
- Connection of 97 households with electricity (Kalembwani and Kaiti bridge area), enhancing access to reliable power sources as well as contributing to economic development in the community.
- Installation of Unoa flood lights enhancing safety and security within Unoa area in Wote town.



URBAN DEVELOPMENT AND PUBLIC SANITATION

To boost urban development and promote public sanitation, the county government: -

- Completed Survey of wote town CBD awaiting approval
- Conducted land clinics to assist citizens on land issues from the experts, surveyors and planners.
- Constructed Upendo toilet in Nziu and Wote Kuku market toilet improving sanitation
- Cabro paved Wote Town along Ngooni-Hyper to Kapeo Petrol station creating parking slots and enhancing the towns aesthetics
- Facilitated market cleaning and waste collection initiative in various markets across the ward

MILESTONES



EDUCATION ACCESS

Enhanced access to education and training through: -

- Conversion of 15 ECDE teachers to permanent and pensionable ensuring consistence access to education and improved livelihood
- Construction of classrooms at 2 ECDE centers namely; Kavila and ST.Johns Malivani ECDEs, providing conducive learning environment.
- Provision of teaching and learning materials to 20 ECDE centers to enhance the quality of early childhood education.
- Supporting 271 needy and bright students in FY 2023/24 with bursaries and full scholarships to 6 students joining form one to enhance retention in learning institutions.
- Construction of a 80 bed capacity dormitory at Wote PWD Centre to provide conducive accommodation to trainees.



SOCIAL PROTECTION AND YOUTH EMPOWERMENT

The county government undertook the following interventions, to enhance social well-being and youth empowerment: -

- Supported 11 organized groups each with a 100- seater tent and 100 chairs, 2 organized groups in Nziu Sub ward with P.A System and 8 agricultural organized groups with spray machines
- Supported a total of 106 elderly persons with food and non-food items alongside NHIF annual subscriptions improving access to healthcare services.
- Provided 29 teams with uniforms, balls and nets to support them participate in ligi mashinani ward leagues and promote sports development
- Levelled Nziu playground creating space to nurture and enhance youth talent.



Solarization at Makueni County Referral Hospital



Mwaani Girl's - Mwaani Borehole - Mwaani Boy's Road



St. John's Malivani ECDE Centre

LIST OF WARD DEVELOPMENT PROJECTS						
NO	PROJECT DESCRIPTION	SUB WARD	BUDGET	FY	STATUS	REMARKS
Agriculture, Livestock, Fisheries and Cooperative Development						
1	Fruit Value chain development	Cross-Cutting	3,000,000	2023/24	Complete	2,937 farmers issued with fruit fly control baits and solar bags in efforts to create zones of low pest prevalence
2	Construction of a fire engine service bay and Workshop at Wote fire Station	Wote	800,000	2023/24	Complete	
Gender, Children, Youth and Social Services						
3	Sports Development Programme	Cross-cutting	925,000	2023/24	Complete	29 teams participated in Ligi Mashinani and benefited from equipment's such as uniforms, balls and nets
4	Support to organized groups: Purchase and delivery of tents and chairs, diapers, wheelchairs, spray pumps and P.A system	Cross-cutting	5,096,000	2023/24	Complete	Supported 11 organized groups with tents and chairs (each with 100-seater tent and 100 chairs). Provided 2 organized groups in Nziu Sub-Ward with public address systems. Supplied 8 agricultural groups with spray machines
5	Nziu playground-Levelling and goal posts	Nziu	1,500,000	2023/24	Complete	Provides space for nurturing talents and promoting sports development
6	Completion of Kitikyumu playground	Nziu	142,032	2023/24	Complete	Provides space for nurturing talents and promoting sports development
ICT, Education and Internship						
7	Kavila ECDE: Construction of 2 classrooms with electrical conduiting works and 3 door pit latrine done. Supply of amchair, cabinet and a table.	Nziu	3,500,000	2022/23	Complete	Provides a conducive learning environment to both Pre-primary1 and 2, with a current enrolment of 30 learners (20 in PP1, 10 in PP2)
8	Makueni PWD Centre: Construction of dormitory	Wote	5,000,000	2022/23	Complete	The 80 bed capacity will provide a conducive accommodation for trainees hence enhancing access to vocational training.
9	St. Johns Malivani: Construction of 2 classrooms with electrical conduiting works and 3 door pit latrine. Supply of amchair, cabinet and a table , Installation of water tanks, and play equipment.	Wote	3,500,000	2022/23	Complete	Provides a conducive learning environment to both Pre-primary1 and 2, with a current enrolment of 37 learners(24 in PP1, 13 in PP2)
Infrastructure, Transport, Public Works Housing and Energy						
10	Road improvement Pogramme in selected roads	Cross-cutting	1,000,000	2022/23	Complete	Approximately 33.7km done improving accessibility within the ward.
11	Roads improvement (fuel for County Machinery): Grading of Kwa mumangi - kwa ngui - kwa kamweli – kamunyolo - 7.5, Malivani – iviani – unoa – 6km, Malivani – kavingo – ngutwa – 8.2km, Kyenze – kathuma – 6.5km, Kwa Kwa kwinga – kwa kyule – nthangu – 7.1km Kwa ikavi - mwaani primary – kambi – 12.6km	Cross-cutting	1,960,000	2023/24	Complete	Total of 47.9km done connecting Mwaani, Kaiti, and Kaviti Villages
12	Hire of machines for opening of rds in Nziu sub ward; ; Grading Nziu, Kombai-Kaiti Rd and Kivandini Kitikyumu-Nziu Rd	Nziu	1,500,000	2022/23	Complete	Total of 6.7km done. Connects Nziu and Unoa location
13	Cleaning Nziu market and opening Mikwani-Nziu-St. Lawrence	Nziu	500,000	2022/23	Complete	Engaged 134 casuals contributing to increased household income
14	Culverts at Kikuyuni along Kivandini Kitikyumu-Nziu Nziu sub ward	Nziu	500,000	2022/23	Complete	Total of 25 metres of culverts installed. The rd connects Kivandini and Nziu
15	Kwa Kitingi -Kwa Joel -Kwa Mwaniki rd opening and grading (Machine Hire): Opening, Grading, culverts & excavation of rds for water structures	Nziu	3,430,000	2023/24	Complete	Total of 7.4KM done. The rd connects the following villages; Nthangathi, Nziu and Yaumba
16	rd opening and grading of Ndivuni-Kisemeini - Kwa Mukosi - Kathuma,	Nziu	2,940,000	2023/24	Complete	6.7km done connecting Nziu, Kyale and kathuma Villages
17	Rehabilitation and refurbishment of governor and deputy governor residences and offices	Wote	12,000,000	2022/23	Complete	Complete and in use
18	Hire of machines for maintenance of rds- Wote sub ward: Grading of Kumuya-Ngunze Rd and Kambati-Kimayu	Wote	1,000,000	2022/23	Complete	Serves Nthangu Village

LIST OF WARD DEVELOPMENT PROJECTS						
NO	PROJECT NAME AND DESCRIPTION	SUB WARD	BUDGET	FY	STATUS	REMARKS
19	Community Labour based works- Wote sub ward: Opening of culverts	Wote	1,500,000	2022/23	Complete	Bush clearing along the rd reserve done increasing household income
20	Jones to Muaani Girls rd: grading , culverts graveling, Installation of and gabions	Wote	4,900,000	2023/24	Complete	
21	Installation of Unoa floodlights	Wote	2,300,000	2023/24	Complete	Enhanced security in the area and improved economic activities
Lands, Urban Development & Environment and Climate Change						
22	Construction of Upendo toilet Nziu	Nziu	1,786,052	2023/24	Complete	Improved the sanitation within the market
23	Construction of Toilet at Kuku market Acacia	Wote	650,000	2023/24	Complete	Improved the sanitation and hygiene.
Water, Sanitation and Irrigation						
24	Distribution of Kathuma borehole, electricity connection and installation of 2 water tanks (@ 10,000M3)	Nziu	5,000,000	2023/24	Complete	Has a yield of 14m ³ /hr and includes a 23km pipeline extension with 51 individual connections. It benefits approximately 480 households, 5 institutions, and 2 shopping centers. Transformer currently breakdown
25	Kamunyolo earth dam: Distribution of water, fencing of treatment structures, construction of spillway sill, installation of two sub mersible pump set, Rehabilitation of distribution infrastructure	Wote	9,312,056	2023/24	Complete	Has capacity of 104,000m ³ , serving Kamunyolo and unoa sub location with a population of 10,104. Also supplies water to Wote town, Muambani and bosnia shopping centres)
26	Matching grant DTF construction - Wote water	Wote	2,700,000	2022/23	Not started	
27	Mwaani booster Borehole: Solar installation and sub mersible pump installation an pipeline connection to existing raising main	Wote	10,000,000	2022/23	Complete	The 3 boreholes has a total yield of 43m ³ /Hr
28	Water distribution from Kitikyumu to Katoloni (Kivandini WOWASCO line)	Wote	2,500,000	2022/23	Complete	Total of 2.9Km of pipeline extension done benefiting 50 households
29	Katoloni pipeline extension, kiosk and water tank construction, relocation of water point	Wote	1,000,000	2023/24	Complete	
30	Kaiti-Kamunyii water project: Construction of sump, connection to electricity, replacement of 800 m of raising main and pipeline extension. HDP, 3 storage tanks(10,000ltrs) and distribution to Kavaati	Wote	6,000,000	2022/23	Complete	Total of 30km of pipeline extension serving a population of approximately 1,200 people and 60 individual connections
31	Distribution of Malivani Borehole water to iviani and Malivani shopping centre	Wote	1,966,140	2022/23	Complete	Has a Yield of 8m ³ /Hr with 2.9km of pipeline extension done. Serves 17 individual connections, 50 households and St. Jones Malivani Pri and Sec
32	Equipping of Makueni Girls borehole at source	Wote	2,940,000	2023/24	Complete	Has Yield of 1.8M ³ /hr. Serving approximately 1,300 Students
33	Kwa Musila Earthdam (repair of spillway gabions installation and stone pitching	Wote	5,000,000	2023/24	Complete	The dam serves 3 villages
34	Kwa Kamende Borehole: Solarization, flushing, Rehabilitation of pump house, test pumping, genset servicing and water quality analysis	Wote	4,000,000	2023/24	Complete	The borehole has a yield of 6M ³ /Hr. 7Km. of pipeline extension was done serving 40 households. Also serves 2 institutions (Muambani Pri and Nyunzu church) and 3 markets (Muambani, Nyunzu and Kivandini)
35	Kituasi water project	Wote	3,430,000	2023/24	Ongoing	
Wote municipality						
36	Wote Town parking Cabro paving (Ngooni-Hyper to Kapeo Petrol station): Cabro paving of Wote Township parking zones	Wote	2,998,264	2023/24	Complete	Done along Kapeo-Ngooni rd, providing parking space, relaxing areas and improving town aesthetics.



GOVERNMENT OF MAKUENI COUNTY
THE COUNTY TREASURY
P.O BOX 78 MAKUENI - 90300
Tel: 0712-171 717
Email: finance@makueni.go.ke

'Wauri wa Kwika neza na Ufungaji'

Printed by: Kenya Literature Bureau



www.makueni.go.ke



[@officialmakueni](https://twitter.com/officialmakueni)



[Governor Press Service](https://www.facebook.com/GovernorPressService)



[@official_makueni](https://www.instagram.com/official_makueni)