



GOVERNMENT OF MAKUENI COUNTY
THE COUNTY TREASURY

WOTE/NZIU

WARD DEVELOPMENT PROFILE, 2025

**PROJECTS FOR THE FINANCIAL YEARS
2022/23, 2023/24 & 2024/25**



'Wani wa Kwika neza na Ufungaji'

1.0 Introduction

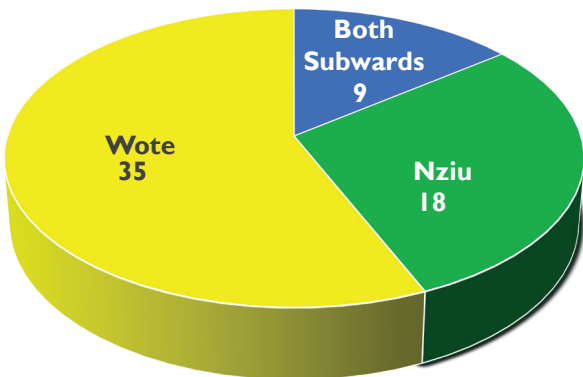
The Ward Development Profile highlights key milestones achieved by the County Government of Makueni in FY 2022/23, FY 2023/24, and FY 2024/25. It documents government interventions aligned with citizens’ development priorities, promoting transparency, accountability, and informed decision-making.

The profile provides a detailed record of projects implemented in each ward, including budget allocations, locations, implementation status, and the resulting community impact.

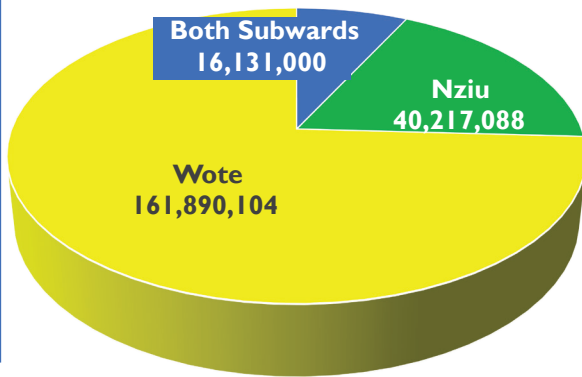
1.1 Background Information



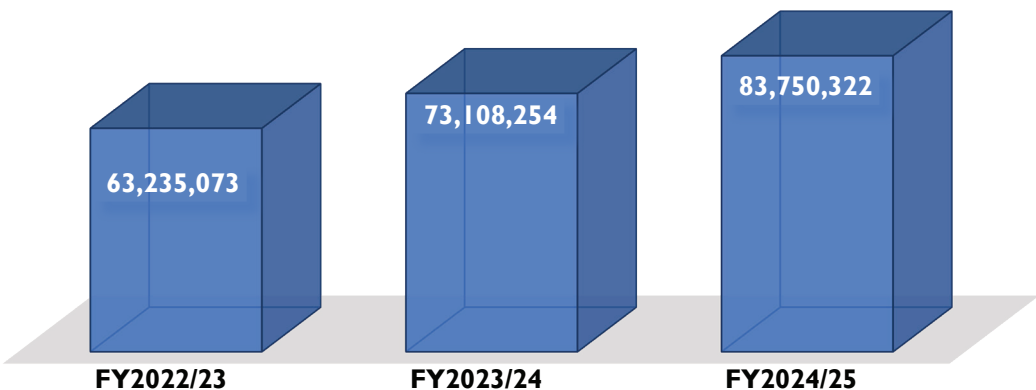
No of Projects for FY2022/23, FY2023/24 and FY2024/25



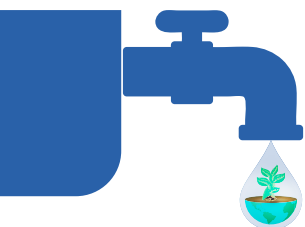
Budgets Allocation for FY2022/23, FY2023/24 and FY2024/25 (Ksh)



Own Source Revenue Collected in the Ward (Ksh)



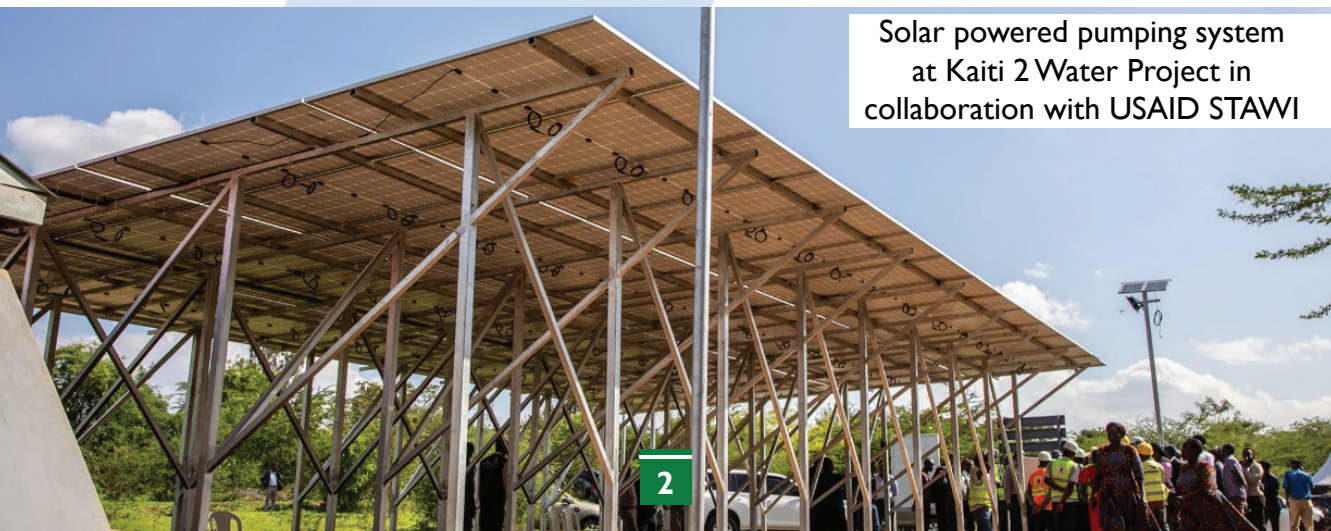
2.0 Achievements



Water Access and Environmental Conservation

The county government increased water access and volumes of water harvested across the ward through the following interventions;

- Solarization of Mwaani boreholes booster which has a total yield of 43m³/hr, serving Wote town
- Equipping Makueni Girls borehole which has a yield of 1.8m³/hr, benefitting approximately 1,300 students.
- Electrification and distribution of Kaiti-Kamunyii water project, serving a population of approximately 1,200 people.
- Improved Kamunyolo earth dam through rehabilitation of the raising main, solarization and construction of a 15km distribution line, enhancing supply of water to 10,104 households, 5 schools, and 5 markets.
- Distribution of Kathuma borehole which has a yield of 14m³/hr and electricity connection, enhancing water access to approximately 480 households, 5 institutions and 2 shopping centers.
- Development of Kituasi water project through solarization and distribution, serving 3,000 households, 13 schools, and 6 markets.
- Rehabilitated Kwa Musila earth dam, serving 200 people in 3 villages.
- Distribution of Malivani borehole which has a yield of 8m³/hr to Iviani and Malivani shopping centre, serving 50 households and St. Jones Malivani Primary and Secondary.
- Enhancement and rehabilitation of Kwa Kamende borehole which has a yield of 6m³/hr, serving 40 households in Muambani, Nyunzu and Kivandini markets.
- Constructed Kwa Kitungu Sand Dam with a capacity of 70,000m³ across River Kaiti.



Solar powered pumping system at Kaiti 2 Water Project in collaboration with USAID STAWI



Road Access and Connectivity

The county government improved road network connectivity and electrification through the following initiatives;

- Opened 21.4kms, graded 156.95km, and graveled 11.1km of roads, connecting most institutions, villages and shopping centers.
- Excavated 881m³ of catch water mitre drains, transforming roads into climate resilient infrastructure and improving agricultural production.
- Connected 128 households with electricity (Kalembwani village, Kaiti bridge area and Shimo estate), enhancing access to reliable power and contributing to local economic development.
- Installed Unoa flood lights in Wote town, providing security for Unoa primary school and the area around bus park.



Road improvement project
in Wote/Nziu Ward



Urban Development

To promote sustainable land use, urban development, environmental conservation, and climate resilience, the county government through Wote Municipality, implemented the following interventions

- Tarmacked 1.1 km road and 1.5 km pedestrian walkways under Kenya Urban Support Programme (KUSP), improving accessibility and stimulating local trade.
- Cabro-paved the parking stretch from Ngooni Hyper-Galana petrol station to Co-operative Bank Junction expanding parking space, enhancing storm-water drainage and flood control.
- Constructed 2 bodaboda sheds within the town to protect the bodaboda operators from harsh weather.
- Installed 9 solar powered high-mast floodlights and continuously maintained over 200 streetlights, enhancing urban safety, visibility, and night-time business operations while promoting the use of green energy.
- Promoted urban greening by growing over 500 trees in Wote town to promote urban greening.
- Repaired Wote green park borehole, ensuring steady water flow to the green park
- Surveyed Wote Township CBD plots, awaiting approval.



Cabro-paving
project, Wote



Agricultural Production and Productivity

To boost food security, improve farmers' incomes, and encourage sustainable farming, the county government rolled out the following initiatives:

- Distributed 7,412 kg of certified maize seed to 3,706 farmers, improving farm productivity and household incomes.
- Trained and equipped 2,937 mango farmers with fruit fly control baits and solarization bags, reducing pest prevalence and tree damage while enhancing fruit quality and marketability.
- Promoted dairy value chain through provision of 291 Artificial Insemination (AI) services through cooperatives, increasing milk production by 23 %.
- Vaccinated 23,439 livestock against pest and diseases, enhanced disease resilience, and improved household income and food security.
- Under KCEP CRAL; supported 800 farmers with certified seed, pesticides and three pond liners of average capacity of 800m³, promoting climate smart farming.
- Established aggregation and a pack house that supported 1,600 farmers across Wote, Katangi, Matiliku, Kilili, Kalamba, Nziu, Kaumoni, Kathonzweni and surrounding wards in exporting mangoes and boosting farmer incomes.
- Formed a ward-based SACCO that was awarded an inclusion grant of Kshs 1,000,000 to support its operations.
- **Under the FLLoCA program**
 - Enhanced household food security through the distribution of 100 kitchen garden units (50 vertical sacks and 50 conical gardens).
 - Established two Climate Smart Agriculture (CSA) demonstration farms at Kaseve and Sarova to enhance farmer learning and adoption of sustainable agricultural practices.
 - Promoted agroforestry and catchment restoration, through the distribution of 600 assorted agroforestry seedlings and 200 riparian tree species.
 - Strengthened solid waste management by providing four skip bins for waste collection and supported community training on CSA practices, promoting climate resilience and environmental stewardship.



Access to Education

The county government has continued to make substantial investments in strengthening the education sector to enhance access, equity and quality of learning through the following interventions;

- Constructed new classrooms at St.Johns Malivani and Kavila ECDEs, leading to enrolment increase of 153% and 43% respectively from the year 2022 to 2025.
- Converted 16 ECDE teachers to permanent and pensionable terms, ensuring consistent access to education and improved livelihood.
- Provided teaching and learning materials to 20 ECDE centers, enhancing the quality of early childhood education.
- Achieved a 10.4% increase in ECDE enrolment, rising from 732 in 2022 to 808 in 2025, as a result of the ECDE interventions in the ward.
- Supported 754 needy students with bursaries and scholarships to 6 Form One entrants, enhancing retention and transition in learning institutions.
- Constructed dormitory at Makueni Integrated Vocational and Empowerment Centre (MIVEC), to provide conducive accommodation for the trainees.

St. Johns Malivani ECDE Centre





Health Services

In an effort to enhance and increase access to essential primary healthcare the county government implemented the following interventions;

- Operationalization of Neonatal ICU in Makueni County Referral Hospital
- Engaged 47 CHPs whose main function is to implement and promote primary health care at community level.
- Installation of a 205kWp grid-tied solar Hybrid system in Makueni County Referral Hospital. This will save the facility 30% of annual electricity expenses besides contributing to environmental sustainability.
- Construction of Morgue at MCRH which is work in progress.
- In partnership with Zuri health and Safaricom foundation conducted a medical camp that saw over 3000 patients screened and managed for various conditions at Unoa grounds.
- The government introduced specialized services in MCRH which has seen opening of more units, this include;
 - Neurosurgical services; Neurosurgical camp at the Makueni Mother and Child Hospital that saw a total of 805 patients screened with 6 successfully operated on while 8 were referred to Kenyatta National Hospital.
 - Fistula services; the fistula camp together with celebrating the International day of ending fistula has seen 108 patients undergo corrective surgery



Neonatal Intensive Care Unit
at Mother and Child Hospital



Neonatal Intensive Care Unit
at Mother and Child Hospital



MCRH
Solarization
Project



Governance

To ensure efficient and effective devolution support services, the County Government;

- Established ward sand management committee, ensuring sustainable sand conservation and utilization.
- Supported the organization and elections of development committees at the village, cluster, sub-ward, and ward levels strengthening governance at grassroots level
- Supported election of market committees responsible for the management of market activities
- Wote and Nziu social halls upgraded into functional community resource centers, enhancing access to information, education, and digital services.
- Responded to 17 emergency incidents enhancing disaster response and preparedness



Public Sanitation

To promote public sanitation and waste management measures aimed at ensuring cleaner markets, and a healthier environment for traders and residents, the government;

- Deployed 79 cleaners to support sanitation services across five markets in the ward.
- Implemented market cleaning and solid waste management initiatives with 7 skip bins supplied across the ward.
- Constructed Upendo toilet in Nziu and Wote Kuku market toilet, improving sanitation



Waste collection skip bins in Wote town



Social Protection and Youth Empowerment

To enhance the well-being and improve the livelihood of the vulnerable population, the county government;

- Provided assorted assistive mobility devices to 22 persons with disabilities to enhancing their self-reliance.
- Supported 21 groups with start-ups for income generating activities with the groups earning collective income of Ksh. 208,000. The support included tents and chair for 11 groups, P.A System for 2 groups and spray machines for 8 agricultural groups.
- Supported 114 elderly persons, representing 8.5 % of the ward's elderly population of 1,349 with food and non-food items, including medical insurance subscription
- Facilitated 36 ward teams in various disciplines to participate in Ligi Mashinani ward league games, promoting sports development at grassroot level.
- Developed Nziu and Kitikyumu play grounds providing conducive venues for sporting activities.
- Trained and issued tools of trade under Ujuzi teke teke programme to 4 youth (2 Plumbing kits, 1 carpentry tool box & 1 Mechanic tool kit).

Assistive mobility
equipment for
self-reliance



Security of Land Tenure

To enhance access to justice and safeguard inheritance rights, the county government:

- Conducted Legal advisory clinics focusing on land and succession matters, reaching 443 People. 100 households are expected to benefit from the program, promoting access to justice and peaceful resolution of inheritance disputes

3.0 List of Ward Development Projects

| No | Project Name | Project Description | Subward | Budget | FY | Status | Remarks |
|--|---|--|---------------|-----------|---------|----------|--|
| ICT, Education & Internship | | | | | | | |
| 1 | Kavila ECDE | Construction of 2 classrooms and a 3 door pit latrine | Nziu | 3,500,000 | 2022/23 | Complete | Has a current enrolment of 33 learners |
| 2 | Makueni PWD Centre | Construction of dormitory | Wote | 5,000,000 | 2022/23 | Complete | provides conducive accommodation |
| 3 | St. Johns Malivani | Construction of 2 classrooms and a 3 door pit latrine | Wote | 3,500,000 | 2022/23 | Complete | Enrolment increased from 17 in 2022 to 45 in 2025 |
| Infrastructure, Transport, Public works and Energy | | | | | | | |
| 4 | Routine maintenance of Wote Ward access road (Machine Hire-MTF) | Kwa Nguluwe - kamunyulo dam 3kms, St marys - Sy Joseph churches kamunyulo , Mavindini junction -Muambani , Kivandini - Katoloni 2-Kyunyu Kitikyumu junction 2km, Wote- Kaseve-malivani Sec School 4km, AIC Bethlehem 1.1km; Nziu subward: Kitindo junction Nziu town 2.8km, Kilungya junction - Kathima junction 1.2km, Muthyoi Primary school 0.1Km, Kyenze -Soko one 5km, Jericho road 1.7km Kitikyumu playground 10.8km | Cross-cutting | 3,000,000 | 2024/25 | Complete | Enhanced connectivity and accessibility |
| 5 | Opening and grading of road | Opening and grading of Mutinda- Mbalu-Kitheini pri-Makuli-Nichodemus-Kwa Matheka road | Nziu | 4,000,000 | 2024/25 | Complete | Enhanced connectivity and accessibility |
| 6 | Road structures (Culverts, gabions and backfilling on specific roads) | Installation of culverts along Kivandini- Yathonza road, Mikwani kombai road and Febi -Makuli road 60 m culverts, 35 no gabions, 80 meter cubed catch water drain | Nziu | 4,000,000 | 2024/25 | Complete | Enhanced connectivity and accessibility |
| 7 | Surveying, Opening grading and murrming and structures of | Makolongo-Kwa Juda- Kaiti-lili-Kavingo roa | Wote | 5,000,000 | 2024/25 | Complete | Enhanced connectivity and accessibility |
| 8 | Grading of road | Road grading and installation of culverts along Shimo-Kwa Maluna-Kwa Ngulue-Kamunyolo dam | Wote | 1,000,000 | 2024/25 | Ongoing | |
| 9 | Road Improvement Pogramme -Fuel | KMTC – Ginnery road, Ginnery – Kalosi road, Mateso road, Kwa Kitise – Cereal road, Kwa Masilia – Cereal road, Whitehouse – Total road , Choma Base – Total road, Stadium road, Choma Base – St John's Sec. Malivani – Nduu Nguu road, Kwa Ngulue – Kwa Kamende road, Mikwani – Mulolongo road, Mikwani – Nziu (St Lawrence) road, Febi road – Makuli road, Kathuma – Kwa Kilungya road, Mutulani – Muvakani road, Kobai – Kyongulu road, Nziu – Muthyoi road | Cross-cutting | 1,000,000 | 2022/23 | Complete | Approximately 33.7Km done |
| 10 | Roads improvement (fuel for County Machinery) | Grading of Kwa mumangi - kwa ngui - kwa kamweli – kamunyolo - Malivani – iviani – unoa – Malivani – kavingo – ngutwa – , Kyenze – kathuma – , Kwa Kwa kwinga – kwa kyule – nthangu – 7.1km Kwa ikavi - mwaani primary – kambi – 12.6km | Cross-cutting | 1,960,000 | 2023/24 | Complete | Total of 47.9Km done connecting Mwaani, Kaiti, and Kaviti Villages |
| 11 | Hire of machines for opening of roads in Nziu sub ward; | Grading Nziu, Kombai-Kaiti Rd and Kivandini Kitikyumu-Nziu Rd | Nziu | 1,500,000 | 2022/23 | Complete | Total of 6.7Km done. Connects Nziu and Unoa location |

| No | Project Name | Project Description | Subward | Budget | FY | Status | Remarks |
|--|--|--|---------|------------|---------|----------|---|
| 12 | Community Labour based works- Nziu | Cleaning Nziu market and opening Mikwani-Nziu-St. Lawrence | Nziu | 500,000 | 2022/23 | Complete | Engaged 134 casuals |
| 13 | Kivandini Kitikyumu-Nziu Nziu sub ward | Culverts at Kikuyuni along Kivandini Kitikyumu-Nziu Nziu sub ward | Nziu | 500,000 | 2022/23 | Complete | Total of 25 metres of culverts installed. The road connects Kivandini and Nziu |
| 14 | Kwa Kitingi -Kwa Joel -Kwa Mwaniki road opening and grading (Machine Hire) | Opening, Grading, culverts & excavation of roads for water structures | Nziu | 3,430,000 | 2023/24 | Complete | Total of 7.4KM done. The road connects the following villages; Nthangathini, Nziu and Yaumba |
| 15 | Road opening | Road opening and grading of Ndivuni-Kisemeini -Kwa Mukosi - Kathuma, | Nziu | 2,940,000 | 2023/24 | Complete | 6.7 KM done connecting Nziu, Kyale and kathuma Villages |
| 16 | Rehabilitation and refurbishment of | Rehabilitation and refurbishment of governor and deputy governor | Wote | 12,000,000 | 2022/23 | Complete | Complete and in use |
| 17 | Hire of machines for maintenance of roads- Wote sub ward | Grading of Kumuya-Ngunze Rd and Kambati-Kimayu | Wote | 1,000,000 | 2022/23 | Complete | Serves Nthangu Village |
| 18 | Community Labour based works- Wote sub ward | Opening of culverts | Wote | 1,500,000 | 2022/23 | Complete | Bush clearing along the road reserve done increasing household income |
| 19 | Construction of Muaani drift and murraming of Jones to Muaani Girls road | Road grading and gravelling, Installation of culverts and gabions | Wote | 4,900,000 | 2023/24 | Complete | Improved access and connectivity in the area. |
| 20 | Unoa grounds floodlights | Installation of Unoa floodlights | Wote | 2,300,000 | 2023/24 | Complete | Enhanced security in the area and improved economic activities |
| Lands, Urban Development & Environment and Climate Change | | | | | | | |
| 21 | Construction of Upendo toilet Nziu | Construction of Upendo toilet Nziu | Nziu | 1,786,052 | 2023/24 | Complete | Improved the sanitation within the market |
| 22 | Wote Kuku market Toilet | Construction of Toilet Kuku market Acacia | Wote | 650,000 | 2023/24 | Complete | Improved the sanitation services and hygiene in the market |
| Water Sanitation and Irrigation | | | | | | | |
| 23 | Kathuma borehole | Distribution of Kathuma borehole, electricity connection and installation of 2 water tanks (@ 10,000M3) | Nziu | 5,000,000 | 2023/24 | Complete | The project has a yield of 14m3/hr with a 23km pipeline extension and the beneficiaries include; 480 households, 5 institutions and 2 shopping centers. |
| 24 | Kaiti-Kamunyii water project | Construction of sump, connection to electricity, replacement of 800 m of raising main and pipeline extension. HDP, 3 storage tanks(10,000ltrs) and distribution to Kavaati | Wote | 6,000,000 | 2022/23 | Complete | Total of 30 Km of pipeline extension serving 1,200 people |
| 25 | Katoloni pipeline extension | Katoloni pipeline extension, construction of a kiosk and water tank, relocation of water point | Wote | 1,000,000 | 2023/24 | Complete | Draws water from kiti kyumu borehole which has a capacity of 18m3 per hour. |
| 26 | Kamunyolo earth dam | Construction of spillway, rehabilitation of the raising mains and solarization | Wote | 10,000,000 | 2024/25 | Complete | A 204,000 m³ dam reservoir and two pipelines totaling 15 km were developed, serving 1,300 households, 5 schools, and 5 markets. |

| No | Project Name | Project Description | Subward | Budget | FY | Status | Remarks |
|--------------------------|---|--|---------|------------|---------|-------------|--|
| 27 | Kituasi water project | Kituasi water project | Wote | 3,430,000 | 2023/24 | Complete | A 100 m³ sump and 4km were developed, reaching a 3,000 people, 13 schools, and 6 markets |
| 28 | Kituasi water project | Construction of 4 inch raising main to Kwa Wambua Kimeu, solarization and electricity, installation of pump set, elevated metallic water tank (100m3). | Wote | 10,000,000 | 2024/25 | Complete | 3.6 Km of raising main done |
| 29 | Kivandini WOWASCO line | Water distribution from Kitikyumu to Katoloni | Wote | 2,500,000 | 2022/23 | Complete | Total of 2.9 Km of pipeline extension done benefiting 50 households |
| 30 | Kwa Kamende Borehole | Solarization, flushing, Rehabilitation of pump house, test pumping, genset servicing and water quality analysis | Wote | 4,000,000 | 2023/24 | Complete | The borehole has a yield of 6M3/Hr. 7Km. of pipeline extension was done serving 40 households. |
| 31 | Kwa Musila Earthdam | Kwa Musila Earthdam (repair of spillway gabions installation and stone pitching | Wote | 5,000,000 | 2023/24 | Complete | The dam serves 3 villages |
| 32 | Makueni Girls borehole | Equipping of Makueni Girls borehole at source | Wote | 2,940,000 | 2023/24 | Complete | Has Yield of 1.8M3/hr. Serving approximately 1,300 Students |
| 33 | Malivani Borehole | Distribution of Malivani Borehole water to iviani and Malivani shopping centre | Wote | 1,966,140 | 2022/23 | Complete | Has a Yield of 8M3/Hr with 2.9 KM of pipeline extension done. Serves 17 individual connections, 50 households and St. Jones Malivani Pri and Sec |
| 34 | Mwaani Borehole | Solar installation and submersible pump installation and pipeline connection to existing raising main Mwaani Booster | Wote | 10,000,000 | 2022/23 | Complete | The 3 boreholes has a total yield of 43M3/Hr |
| 35 | Kaiti I | Installation of Submersible pumps and infiltration galleries | Wote | 4,000,000 | 2024/25 | Not started | Not Started |
| 36 | Matching grant DTF construction - Wote water | Matching grant DTF construction - Wote water | Wote | 2,700,000 | 2022/23 | Not started | Not started |
| Wote Municipality | | | | | | | |
| 37 | Wote Town parking Cabro paving (Ngooni-Hyper to Kapeo Petrol station) | Cabro paving of Wote Township parking zones | Wote | 2,998,264 | 2023/24 | Complete | The parking zones improved revenue collection by 20% as well as aesthetic of the town |
| 38 | Road upgrading | Road upgrading - Cabro paving access roads in Wote Township -A thousand palms - kwa nguku - Equity road, Kapeo - Cooperative Bank parking lot, Mumu Super market Ngooni soda depot - kasanga butchery road | Wote | 10,000,000 | 2024/25 | Complete | Cabro paving of 2,720 meters done |
| 39 | Erection of integrated solar flood light high mast | Erection of integrated solar flood light high mast 20 Metre (Bangladesh- Wote town) | Wote | 3,000,000 | 2024/25 | Complete | Functional 20 meters floodlight installed |
| 40 | Drainage improvement | Drainage improvement and Murruming of Old slaughter to Kwa Kitindo Road -Construction of Culverts, Grading and Murruming | Wote | 4,000,000 | 2024/25 | Complete | Improved stormwater management and road accessibility |

| No | Project Name | Project Description | Subward | Budget | FY | Status | Remarks |
|---|---|--|---------------|-----------|---------|----------|---|
| 41 | Climate change adaptation initiative | Municipality greening programme | Wote | 800,000 | 2024/25 | Complete | Enhanced greenery and environmental aesthetics |
| 42 | Construction of bodaboda sheds | Construction of bodaboda sheds | Wote | 1,000,000 | 2024/25 | Complete | Two bodaboda sheds were constructed serving 200 riders. |
| 43 | Repair of Green Park Borehole | Repair of Green Park Borehole | Wote | 1,000,000 | 2024/25 | Complete | Complete |
| 44 | Kalamba Modern toilet | Construction of Modern toilet | Nziu | 2,300,000 | 2024/25 | Complete | Serves approximately 600 traders |
| Agriculture, Livestock, Fisheries & Cooperative Development | | | | | | | |
| 45 | Fruit Value chain development | Fruit Value chain development | Cross-cutting | 3,000,000 | 2023/24 | Complete | 2,937 farmers issued with fruit fly baits creating zones of low pest prevalence |
| 46 | Extension Service delivery | Support establishment of one model youth community led extension service delivery | Nziu | 3,099,004 | 2024/25 | Ongoing | Ongoing |
| County Attorney | | | | | | | |
| 47 | Sensitization and support to land succession -filing, sensitization, collection of data and document perfection. | Sensitization and support to land succession -filing, sensitization, collection of data and document perfection. | Wote | 1,000,000 | 2024/25 | Ongoing | 443 people reached |
| Devolution Public Participation County Administration and Special Programs | | | | | | | |
| 48 | Firefighting & Water rescue equipment | Purchase of Firefighting & Water rescue equipment | Wote | 2,000,000 | 2023-24 | Complete | Complete |
| 49 | Wote Fire Station | Construction of a fire engine service bay and Workshop at Wote fire Station | Wote | 800,000 | 2023-24 | Complete | Complete |
| Gender, Children, Youth, Sports and Social Services | | | | | | | |
| 50 | Sports Development Programme | Ligi Mashinani | Cross-cutting | 925,000 | 2023/24 | Complete | 29 teams participated in Ligi Mashinani and benefited from equipment's such as uniforms, balls and nets |
| 51 | Support to organized groups | Purchase and delivery of tents and chairs, diapers, wheelchairs, spray pumps and P.A system | Cross-cutting | 5,096,000 | 2023/24 | Complete | Supported 11 organized groups with tents and chairs; Provided 2 organized groups in Nziu Sub-Ward with public address systems; Supplied 7 agricultural groups with spray machines |
| 52 | Sports and Youth development Programme -Youth, Talent and Infrastructure development foreestablishment of sport fund and development of athletics, ballgames, indoor games, sports development proposals | Support to "Ligi Mashinani" ward games | Cross-cutting | 300,000 | 2024/25 | Complete | Ligi mashinani done, cash awards issued to support ward teams |

| No | Project Name | Project Description | Subward | Budget | FY | Status | Remarks |
|------------------------|--|---|---------------|------------|---------|----------|--|
| 53 | PWD support-Assistive Devices - Support PWDs with assorted assistive devices | Purchase and delivery of assorted devices | Cross-cutting | 500,000 | 2024/25 | Complete | 22 persons with disabilities benefitted with assistive devices. |
| 54 | Sports Development Programmes | Facilitation for sporting activities | Cross-cutting | 350,000 | 2024/25 | Ongoing | Tournaments done awaiting payment of cash awards. |
| 55 | Nziu playground | Nziu playground-Levelling and goal posts | Nziu | 1,500,000 | 2023/24 | Complete | Create adequate space for sporting activities |
| 56 | Kitikyumu playground | Completion of Kitikyumu playground | Nziu | 142,032 | 2023/24 | Complete | Create adequate space for sporting activities |
| 57 | Kitikyumu playground | Fixing of goalposts at Kitikyumu playground | Nziu | 500,000 | 2022/23 | Complete | Create adequate space for sporting activities |
| 58 | Completion of Kitikyumu playground | Completion of Kitikyumu playground | Nziu | 500,000 | 2022/23 | Complete | Goal posts were installed to improve the functionality of the playground. |
| 59 | Nziu social hall | Fencing, electrification and construction of toilet | Nziu | 3,520,000 | 2022/23 | Complete | Complete |
| 60 | Sports Development Programme; Nziu playground-Levelling and goal posts | Levelling and goal posts | Nziu | 1,500,000 | 2024/25 | Complete | It provides a safe space for sporting |
| Health Services | | | | | | | |
| 61 | Infrastructure improvement for Health Facilities-AIA | Equipping of County Makueni Referral Hospital | Wote | 14,905,700 | 24/25 | Complete | Health facility infrastructure is being improved through appropriation-in-aid. |
| 62 | MCRH Morgue Fridges - AIA | Construction of MCRH Morgue | Wote | 20,000,000 | 24/25 | Ongoing | Ongoing |

4.0 List of FY2025/26 Projects

| No | Department | Subward | Project Name | Budget |
|----|-----------------|---------------|---|-----------|
| 1 | Agriculture | Cross-cutting | Provision of subsidized certified seeds -Provision of subsidized certified seeds for: maize- Tsavo WF44I | 3,000,000 |
| 2 | Devolution | Cross-cutting | Budget for civic education -Sensitization forums for public on matters development/issuance of IDs | 800,000 |
| 3 | Health Services | Nziu | Construction of Maternity unit at Nziu health centre -Construction of the maternity building | 2,800,000 |
| 4 | Health Services | Cross-cutting | Mutula Care-Registration of 600 households into SHA(PWDs),Vulnerable and the needy | 3,000,000 |
| 5 | Gender | Cross-cutting | Ajira Kwa vijana -Engaging youths to do casual works (Road meter drains) on wage basis for a particular period of time | 2,000,000 |
| 6 | Gender | Cross-cutting | Ligi Mashinani –purchase of sports attire, balls and cash awards, allowances for both players and referees | 2,000,000 |
| 7 | Gender | Cross-cutting | PWD empowerment -Seed capital for business start ups for organized groups and also mapping | 1,500,000 |
| 8 | Gender | Wote | Purchase of 50 seater tents and chairs to 10 groups in wote sub ward | 1,500,000 |
| 9 | Gender | Wote | Youth and women empowerment-lukundo women group (purchase of catering utensils) @ Ksh 250,000 and Victoria squad youth group (to establish tree nursery @ ksh 250,000 | 500,000 |
| 10 | Infrastructure | Cross-cutting | Roads maintenance programme | 2,000,000 |
| 11 | Infrastructure | Nziu | construction of Kyambui drift -Construction of a drift | 5,000,000 |

| No | Department | Subward | Project Name | Budget |
|----|----------------------------------|---------------|--|------------|
| 12 | Infrastructure | Wote | Cosntruction of road structures for Makolongo- kwa Juda- Lili-Kavingo Road. and opening of Malivani-Unoa Road | 3,000,000 |
| 13 | Infrastructure | Wote | Installation of box culverts at kwa Ngui Mulwa along kwa mumangi-kwa kakweli road | 500,000 |
| 14 | Infrastructure | wote | Construction of two door toilet at Muthyoi kikuyuni meeting ground | 500,000 |
| 15 | ICT,Education and Internship | Nziu | Construction of Kitikyumu ECDE -Construction of Ino. ECDE Classroom with an office & store, Electrical conduit, shelving to the stores, lockable metallic cabinet, Wooden Desk, Wooden Arm Chairs, Water harvesting goods (10,000Ltrs Water Tank and base), 40 No. Kiddy chairs and 20. No. Kiddy tables, Play equipment 4 piece set (double swing, slide, climbing frame and double see-saw), Display soft board and Branding, Publicity and Signwritin | 2,400,000 |
| 16 | ICT,Education and Internship | Wote | Equipping of MIVEC Dormitory -Purchase of beddings, curtains, ceilings and water tanks | 1,500,000 |
| 17 | ICT,Education and Internship | Cross-cutting | Youth Empowerment - Ujuzi Teke teke | 1,000,000 |
| 18 | Water, Sanitation and Irrigation | Wote | Electricity Back-up and distribution of Kituasi water project to six designated water points | 6,000,000 |
| 19 | Education | Nziu | Nziu CTTI -Construction of dormitory | 4,000,000 |
| 20 | Health | Nziu | Nziu Health Centre-Installation of solar power | 2,500,000 |
| 21 | Health | Nziu | Power backup for Nziu health centre solar and generator | 1,500,000 |
| 22 | Lands | Wote | Survey for titling of Wote townships Public Utilities | 4,000,000 |
| 23 | Transport | Nziu | Construction of Kyambui Drift | 5,000,000 |
| 24 | Water | Wote | Wote Town Improvement Project - Distribution of Kwa Kitungu Water Project | 10,000,000 |
| 25 | Water | Wote | Construction of a new sump tank and construction of a latrine at Kaiti 2 | 5,000,000 |
| 26 | Water | Wote | Completion of Kamunyolo Sump and relocation of the pipes | 3,500,000 |
| 27 | Water | Wote | Drilling of SEKU Wote University borehole | 2,000,000 |
| 28 | Water | Nziu | Desilting and Repair of Kauani earth dam | 1,000,000 |
| 29 | Wote Municipality | Wote | Purchase of Wote Bus park land | 40,000,000 |
| 30 | Wote Municipality | Wote | Construction of modern Boda Boda sheds in Wote town | 1,000,000 |
| 31 | Wote Municipality | Wote | Supply of 10 skip bins for towns within the Municipality (Mukuyuni I, Wote 2, Mbuvo I, Kathonzweni I, Kwa Kathoka I, Kalamba I, Kilili I, Kilala I and Kako I) -Branded skip bins, 4-5 tonnes capacity | 3,200,000 |

5.0 Key Partners in the Ward



Name of the project/Programme

Kaiti 2 project
Solarization and water distribution



Name of the project/Programme

Mwaani Borehole
Solarization and extension pipelines



icipe

African Insect Science for Food and Health

Name of the project/Programme

Fruit Value Chain Development
Support in fruit fly control



Name of the project/Programme

Medical camp
Conducted a medical camp that saw over 3000 patients screened and managed for various conditions



GOVERNMENT OF MAKUENI COUNTY
THE COUNTY TREASURY

P.O BOX 78 MAKUENI - 90300

Tel: 0712-17 17 17

Email: finance@makueni.go.ke

Website: www.makueni.go.ke